

HYGIENE & SANITATION

CX SERIES WATERMAKER SYSTEMS

CX is our commercial-grade series designed for land-based situations, oil rigs, military applications and other industrial-grade demands. With oversized media filtration technology to extend the life of replacement sediment filters, CX watermakers are made to stand up to heavy use.

**FULLY AUTOMATIC
OPERATION**

**OVERSIZED
MEDIA FILTRATION**

**REMOTE ACCESS
GLOBALLY**



SEAWATER

Mobile living made easy.

DOMETIC

seaXchange
Sea Water Reverse Osmosis

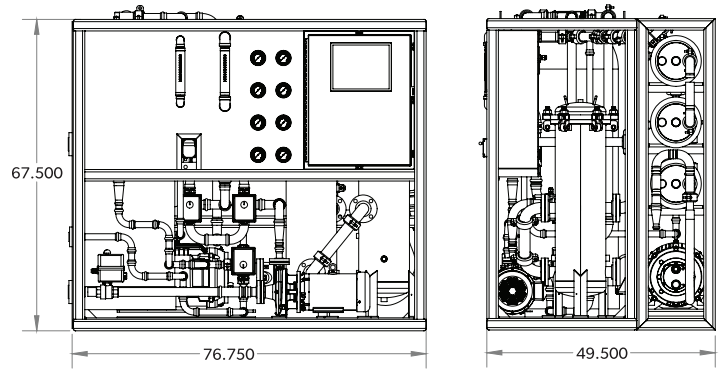
BUILT TOUGH FOR THE MOST DEMANDING APPLICATIONS



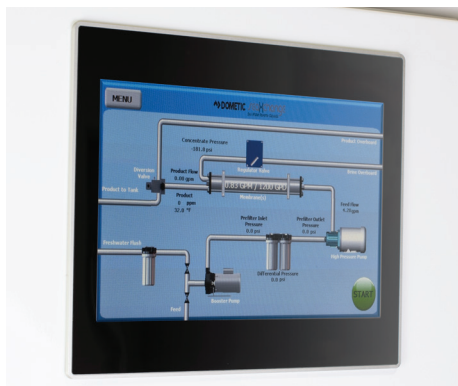
Dometic Sea Xchange CX series commercial-grade watermakers provides the optimum solution to the most demanding applications including commercial marine, petroleum exploration, development and support, offshore activities, military vessels, private and commercial real estate developments and resorts, municipalities, and a variety of other applications where commercial demands require larger volumes of water.

KEY BENEFITS

- Fully automatic with mechanical and electrical redundancy
- Uses variable frequency technology to increase system output
- Produces 8,000 to 40,000 GPD
- 316SS plumbing on high-pressure and low-pressure sides
- Digital and analog pressure and flow monitoring
- Automatic, backwashable media filter reduces service and maintenance costs
- Automatic, fully programmable freshwater flush extends membrane service intervals
- Rugged, Line-X coated, welded steel frame
- Membrane racks can be remotely mounted
- Utilizes the most advanced 316SS passivated motor mount isolating technology for balanced operation
- Includes a super-duplex, water-cooled, radial axial high pressure pump that has an 8,000 hour recommended service interval, which greatly reduces ongoing maintenance costs
- 316L SS prefilter housings provide a total of 340 sq. ft. of prefiltration surface area
- Superior prefiltration extends system component life and reduces maintenance costs
- Remote monitoring and operation minimizes service and maintenance costs
- Customer specified prefiltration and postfiltration packages



Model	CX
Capacity Per Day	8,000-40,000 / 30-151
Inquire For Power Requirements	
Net Weight (lbs/kg)	3500/1590
Shipping Weight (lbs/kg)	4000/1814
Shipping Dimensions (H x W x L)(in/cm)	60 x 84 x 84/152 x 213 x 213



1. EASY TO USE

Color touchscreen with graphical display for easy operation



2. BUILT-IN REDUNDANCY

Mechanical override in case of computerized automation failure



3. INDUSTRIAL PRE-FILTRATION

170 sq. foot 2 stage sediment filtration